

Alvi Modified Hohmann Retractor

Designed by Hasham Alvi, MD

Designed for use during minimally invasive anterior hip replacement surgery, the retractor is placed through the capsule, into the femoral head, allowing for retraction of the rectus femoris

The extra bend in the handle allows the assistant to stand on the operative side of the table allowing for ease of handling of the retractor.



PRODUCT NO:
4549
Overall Length: 8.75" (22,2 cm)
Blade Width: .75" (19 mm)



Bacastow Axillary Nerve Retractor with Suction

Designed by David Bacastow, MD

Helps to retract and protect the axillary nerve during shoulder surgery, while also providing suction to the surgical site



PRODUCT NO:
8739
Overall Length: 11" (27,9 cm)
Width: .5" (12,7 mm)
Tongue Length: 1.2" (30 mm)

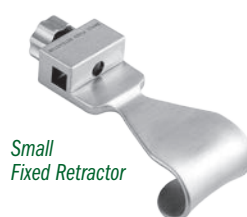


Bell-Hawkins Shoulder Frame and Blade Set

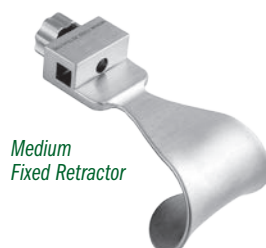
Designed by Robert H. Bell, MD and Richard Hawkins, MD

Retractor and Frame System for Total Shoulder Arthroplasty

PRODUCT NO'S:
4696-00 [Bell-Hawkins – Complete Set]
Included in Set/Available individually:
4696-01 [Small Adjustable Retractor] Overall Length: 7.375" (18,7 cm) Handle Length: 6" (15,2 cm) Blade Width: 1.25" (32 mm) Blade Depth: .8" (20 mm)
4696-02 [Medium Adjustable Retractor] Overall Length: 7.375" (18,7 cm) Handle Length: 6" (15,2 cm) Blade Width: 1.7" (43 mm) Blade Depth: 1.25" (32 mm)
4696-03 [Deep Adjustable Retractor] Overall Length: 7.375" (18,7 cm) Handle Length: 6" (15,2 cm) Blade Width: 1.6" (41 mm) Blade Depth: 2" (51 mm)
4696-04 [Small Fixed Retractor] Overall Length: 3" (7,6 cm) Handle Length: 1.5" (3,8 cm) Blade Width: 1.25" (32 mm) Blade Depth: .8" (20 mm)
4696-05 [Medium Fixed Retractor] Overall Length: 3" (7,6 cm) Handle Length: 1.5" (3,8 cm) Blade Width: 1.7" (43 mm) Blade Depth: 1.25" (32 mm)
4696-06 [Deep Fixed Retractor] Overall Length: 3" (7,6 cm) Handle Length: 1.5" (3,8 cm) Blade Width: 1.25" (32 mm) Blade Depth: 2.375" (60 mm)
4696-07 [Adjustable Lock Block] Dimensions: 1.375" x 1" x .85" (35 mm x 25 mm x 20 mm)
4696-Frame [Frame Assembly] Dimensions: 10" x 9" (25,4 cm x 22,9 cm)



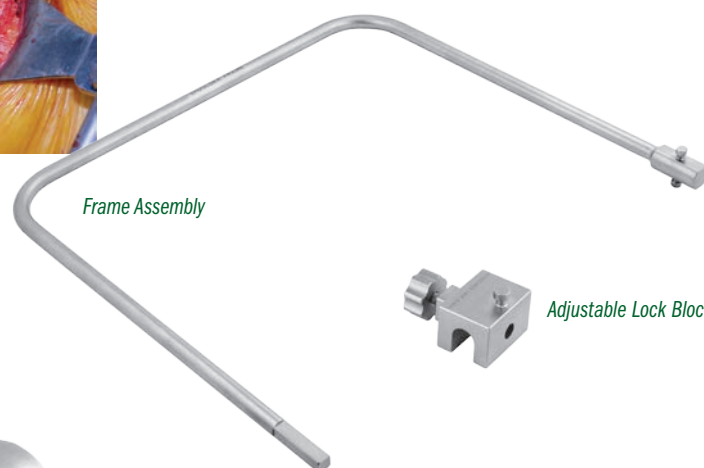
Small Fixed Retractor



Medium Fixed Retractor

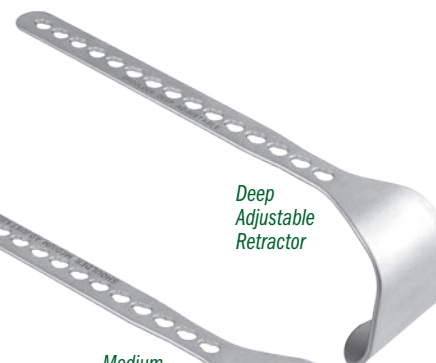


Deep Fixed Retractor

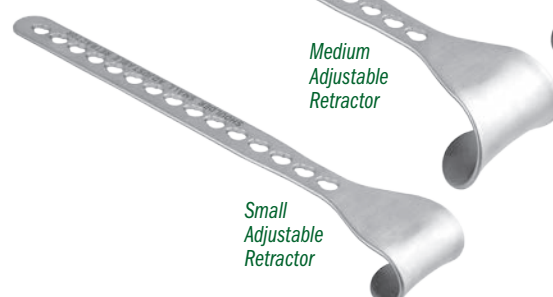


Frame Assembly

Adjustable Lock Block



Deep Adjustable Retractor



Medium Adjustable Retractor



Small Adjustable Retractor

Havens Modified Kolbel Soft Tissue Retractor

Designed by Philip Havens, MD

Designed for retraction on deltoid split incisions on mini-open rotator cuff repairs

Jaws and arms are parallel with no gap when closed to allow easier insertion in tight spaces.

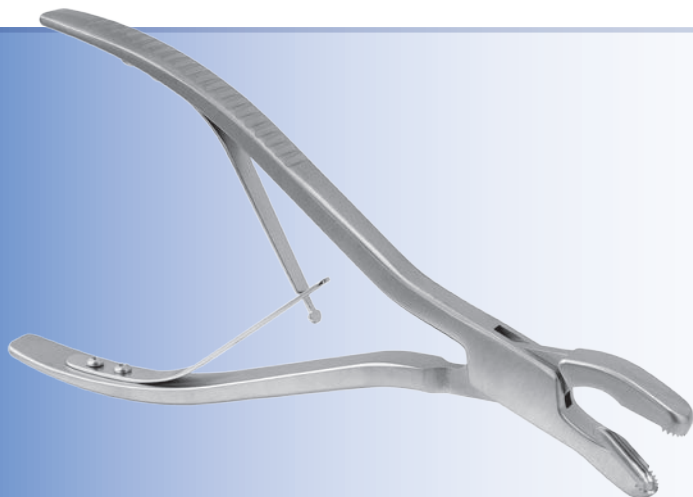
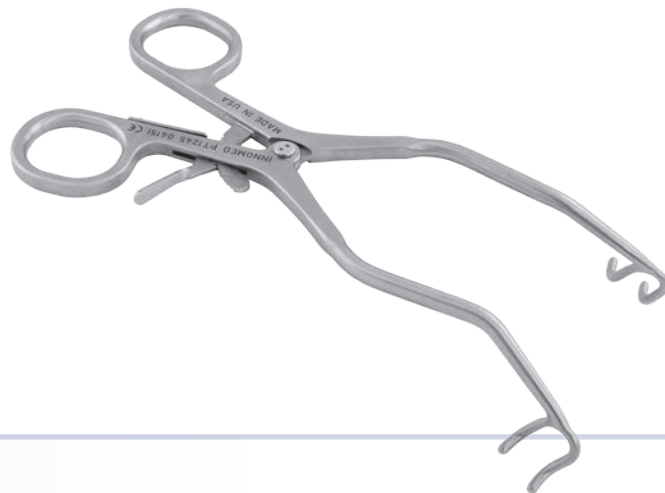
PRODUCT NO:

T1006-02

Overall Length: 7.5" (19,1 cm)

Opens To: 4.5" (11,4 cm)

Prong Depth: 18 mm



Hannum Modified Angled Grasper

Designed by Scott Hannum, MD

Heavy duty large bone grasper designed to help trim acetabular osteophytes — angled to ergonomically fit around the rim via the direct anterior approach

PRODUCT NO:

1775-04

Overall Length: 8.5" (21,6 cm)

Jaw Width: 11 mm

Jaw Bite Internal: 9 mm x 21 mm



Large T-Handle Fixed Drivers

Large easy grip soft silicone handled drivers help provide a sturdy non-slip grip

PRODUCT NO'S:

8248 [Zimmer Hall Quick-connect]

Overall Length: 5.75" (15,6 cm)

Handle Width: 4.625" (11,6 cm)

8249 [Hudson Quick-connect]

Overall Length: 6.75" (17,1 cm)

Overall Length with Pin In Handle: 11.5" (29,2 cm)



Zimmer Hall
Quick-connect



Hudson
Quick-connect



Levy Humeral Stem Extraction Punch

Designed by Jonathan Levy, MD

Ultra hard cobalt chrome shaft and impactor tip designed to help remove a humeral stem during revision total shoulder arthroplasty

Can be used to open up distal cement mantle or pedestal during revisions.



PRODUCT NO:

8627

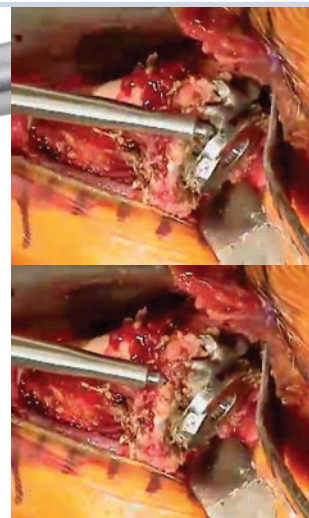
Overall Length: 12" (30,5 cm)

Handle/Platform Length: 4.75" (12,1 cm)

Punch Rod Length: 7.25" (18,4 cm)

Platform: 3" x .75" (7,6 cm x 1,9 cm)

Shaft Diameter: 8 mm, tapers to 4 mm at tip



INNOMED

© 2017 Innomed, Inc.

Innomed, Inc
103 Estus Drive
Savannah, GA 31404
USA

Tel 912.236.0000
Fax 912.236.7766

www.innomed.net
info@innomed.net

Innomed-Europe LLC
Alte Steinhauserstr. 19
CH-6330 Cham
Switzerland

Tel 0041 (41) 740 67 74
Fax 0041 (41) 41 740 67 71

www.innomed-europe.com
info@innomed-europe.net

Innomed-Europe GmbH
c/o Emons Logistik GmbH
In Rammelswiesen 9 D-78056
Villingen-Schwenningen
Deutschland

Tel 0049 (0) 7720 46110 60
Fax 0049 (0) 7720 46110 61

www.innomed-europe.com
info@innomed-europe.net