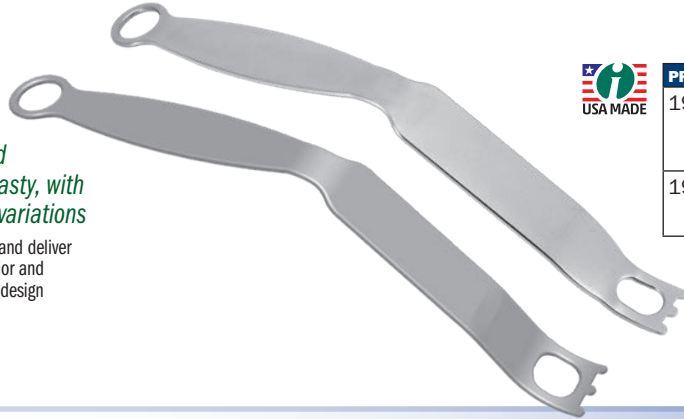


## Angled Glenoid Retractors – Forked

Designed by R.L. Stowell, MD

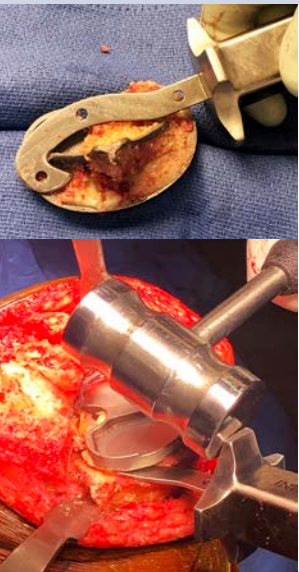
*Designed to help with exposure of the difficult glenoid and facilitation of glenosphere placement for reverse arthroplasty, with wide and narrow versions to accommodate most glenoid variations*

Specifically designed bend allows the retractor to sit along the posterior aspect and deliver the glenoid vault into the surgical field while retracting the humeral head posterior and lateral without excessive force on the glenoid neck, while the working end of the design allows reaming and peripheral bone removal without binding on the reamer.



### PRODUCT NO'S:

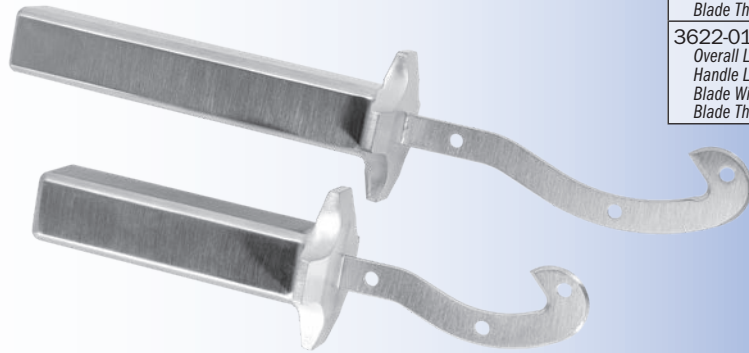
<b>1902-N [Narrow]</b>
Overall Length: 10" (25,4 cm)
Blade Width: 1" (25 mm)
Blade Width at End: .825" (21 mm)
<b>1902-W [Wide]</b>
Overall Length: 10" (25,4 cm)
Blade Width: 1" (25 mm)



## Curved Osteotome for Total Knee Revision

Designed by Morteza Meftah, MD

*Designed to help in the removal of a tibial component, the curved blade is designed to make contact from multiple angles*



### PRODUCT NO'S:

<b>3622 [Standard]</b>
Overall Length: 11" (27,9 cm)
Handle Length: 6" (15,2 cm)
Blade Width: 12 mm
Blade Thickness: 2 mm
<b>3622-01 [Small]</b>
Overall Length: 8" (20,3 cm)
Handle Length: 4.5" (11,4 cm)
Blade Width: 12 mm
Blade Thickness: 2 mm

## Duellman Total Hip Trunnion Clamp

Designed by Todd Duellman, MD

*Designed for use on a trial modular neck/trunnion at the time of placement on/off the femoral stem to help determine offset and neck length*

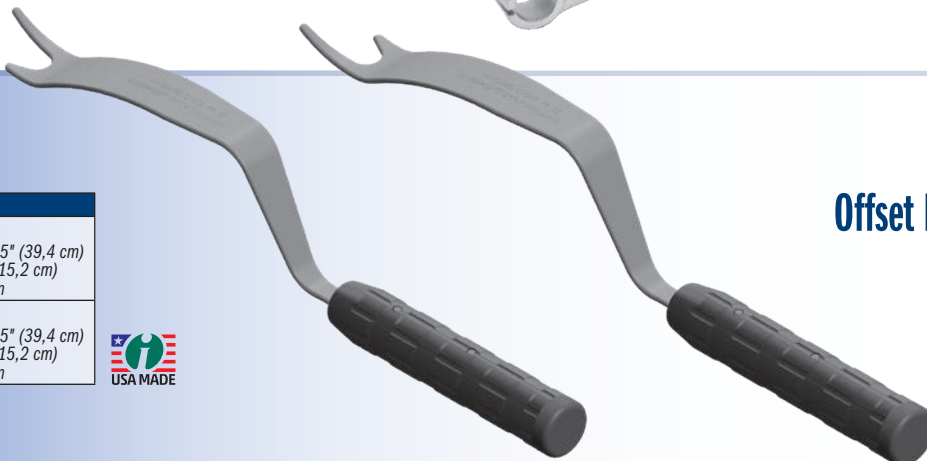
### PRODUCT NO:

<b>1817</b>
Overall Length: 8" (20,3 cm)



### PRODUCT NO'S:

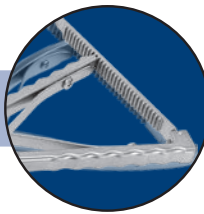
<b>C1017 [Left]</b>
Overall Length: 15.5" (39,4 cm)
Handle Length: 6" (15,2 cm)
Blade Width: 32 mm
<b>C1018 [Right]</b>
Overall Length: 15.5" (39,4 cm)
Handle Length: 6" (15,2 cm)
Blade Width: 32 mm



## Offset Medial Acetabular Retractors with Large Handle

*Designed for acetabular exposure during total hip surgery*

## Spreaders with Small Grip Handle



*Designed with the grip closer together for easier gripping and to help reduce hand fatigue*

### Lombardi Gap Balancing Femoral Tibial Spreader with Small Grip Handle

Designed by Adolph V. Lombardi Jr., MD



#### PRODUCT NO:

1877-SG [Small with Small Grip and Grooved Pads]



### Ortho Self-Retaining Retractor with Small Grip Handle



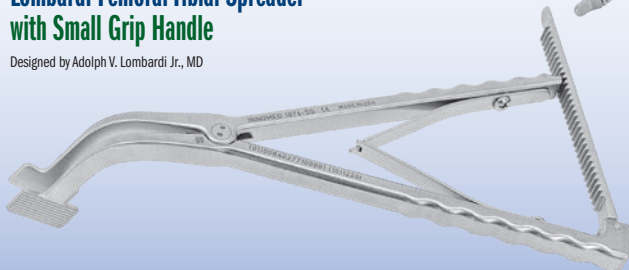
#### PRODUCT NO:

1842-01-SG [Small Serrated, Small Grip]



### Lombardi Femoral Tibial Spreader with Small Grip Handle

Designed by Adolph V. Lombardi Jr., MD



#### PRODUCT NO:

1876-SG [Small with Small Grip and Grooved Pads]



### Calibrated Femoral Tibial Spreaders - Small with Small Grip Handle

#### PRODUCT NO'S:

1850-SG [Small with Grooved Pads and Small Grip Handle]

1850-01-SG [Small with Coated Pads and Small Grip Handle]

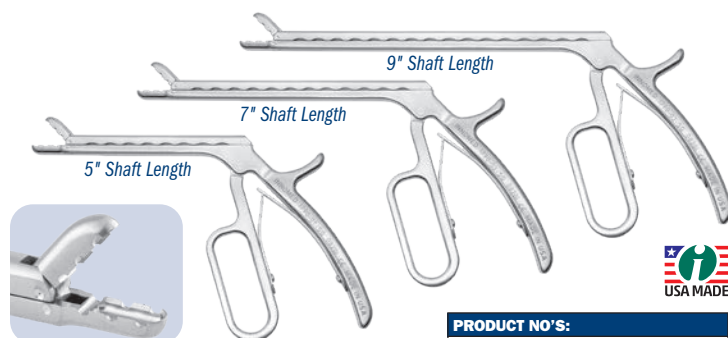
1865-SG [Small with Round Pads and Small Grip Handle]



## Graspers with Small Grip Handle



*Designed with the grip closer together for easier gripping and to help reduce hand fatigue*



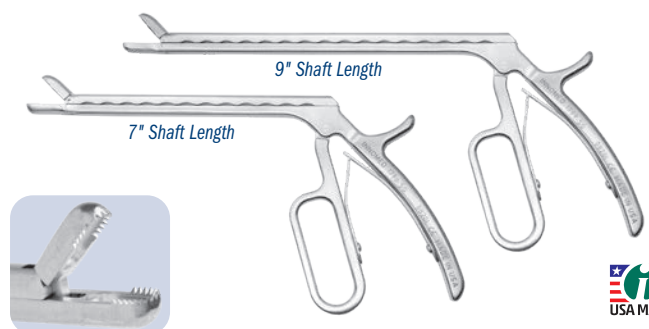
### Intraarticular Tissue Grasper/Rongeurs with Small Grip Handle

#### PRODUCT NO'S:

1790-01-SG [5" Small Grip]

1790-03-SG [7" Small Grip]

1790-02-SG [9" Small Grip]



### Shark Tooth Graspers with Small Grip Handle

Designed by Luis Ulloa

#### PRODUCT NO'S:

1798-SG [7" Small Grip]

1799-SG [9" Small Grip]



# INNOMED

© 2021 Innomed, Inc.

**Innomed, Inc**  
103 Estus Drive  
Savannah, GA 31404  
USA

Tel 912.236.0000  
Fax 912.236.7766  
[www.innomed.net](http://www.innomed.net)  
info@innomed.net

**Innomed-Europe LLC**  
Alte Steinhauserstrasse 19  
CH-6330 Cham, Switzerland  
Tel 0041 (0) 41 740 67 74  
Fax 0041 (0) 41 740 67 71  
[www.innomed-europe.com](http://www.innomed-europe.com)  
info@innomed-europe.com  
contact.france@innomed-europe.com

**Innomed-Europe GmbH**  
c/o Emons Logistik GmbH  
In Rammelswiesen 9 D-78056  
Villingen-Schwenningen  
Deutschland  
Tel 0049 (0) 7720 46110 60  
Fax 0049 (0) 7720 46110 61  
[www.innomed-europe.com](http://www.innomed-europe.com)  
info@innomed-europe.com