

2.5" Blade with Teeth for Self-Retaining Hip Retractor System

PRODUCT NO:

C1013

Overall Length: 6.75" (17,1 cm)

Handle Length: 6.375" (16,2 cm)

Blade Depth: 2.5" (6,4 cm)

Blade Width: 1" (2,54 cm)



Bhargava DAA Femoral Stem Impactor

Designed by Tarun Bhargava, MD

Helps allow for easier impaction of most femoral stems through the DAA approach – protects the trunion and helps allow for control of version during impaction

PRODUCT NO:

5308

Overall Length: 10" (25,4 cm)



Use in Knee Surgery

Berger Block Positioner

Designed by Richard Berger, MD

Designed for lower extremity positioning with dual height options

PRODUCT NO'S:

2750-00 [Berger Block Positioner Set]

Dimensions with Pads: 4.75" x 6.75" x 8" (12,1 cm x 17,1 cm x 20,3 cm)

Includes / Available Individually:

2750-01 [Berger Block Positioner Only]

Dimensions: 4.125" x 6.125" x 8" (10,5 cm x 15,6 cm x 20,3 cm)

2750-P [Berger Block Positioner Pad Only]

[Berger Block Positioner Brown Strap Only]

(2) Included in Set

Optional Items:

2750-S [Berger Block Positioner Brown Strap] Pkg of 10



Use in Hip Surgery

Double Ended Grater Cleaning Tool

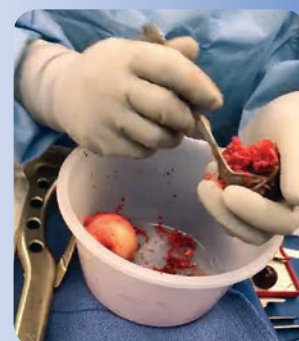
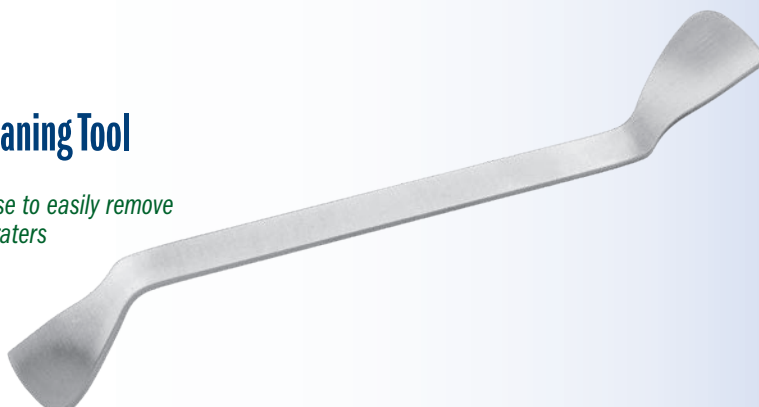
Designed by Brandon Thompson, CST/CFA

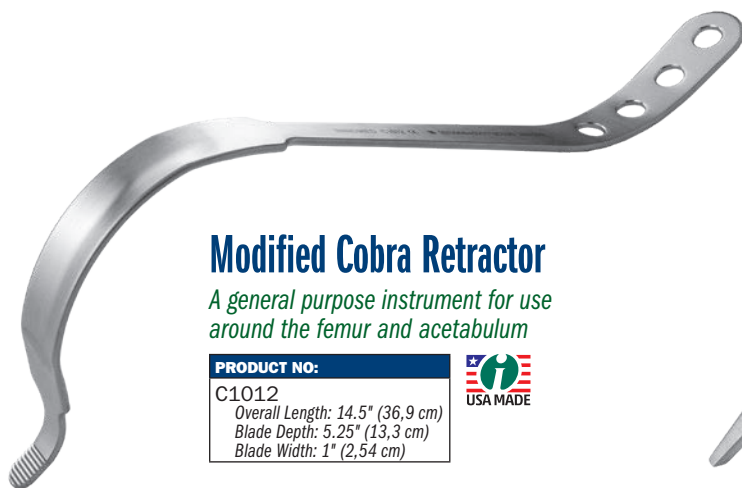
Designed for right or left handed use to easily remove bone fragments from acetabular graters

PRODUCT NO:

8007

Overall Length: 7" (17,8 cm)





Modified Cobra Retractor

A general purpose instrument for use around the femur and acetabulum

PRODUCT NO:

C1012

Overall Length: 14.5" (36,9 cm)

Blade Depth: 5.25" (13,3 cm)

Blade Width: 1" (2,54 cm)



Narrow Right Angle Retractor

Designed for soft tissue retraction

PRODUCT NO:

C1011

Overall Length: 8.5" (21,6 cm)

Handle Length: 6.75" (17,1 cm)

Blade Depth: 4.5" (11,4 cm)

Blade Width: .375" (1 cm)



Proximal Femoral Elevator – Narrow with Coating

Design modification by Lalit Puri, MD

Help provide better access to the intramedullary cana, while the coating helps to protect the prosthesis taper

PRODUCT NO:

3420-06

Overall Length: 11.5" (29,2 cm)

Handle Length: 6.5" (16,5 cm)

Blade Width at Widest: 45 mm



Rib Periosteal Rasp

PRODUCT NO:

C1004

Overall Length: 17" (43,2 cm)

Handle Length: 5" (12,7 cm)

Rasp Pad: 7,5 x 12 mm



Rosen "V" Deep Soft Tissue Retractor

Designed by Adam Rosen, MD

Designed for soft tissue retraction with an ergonomic handle

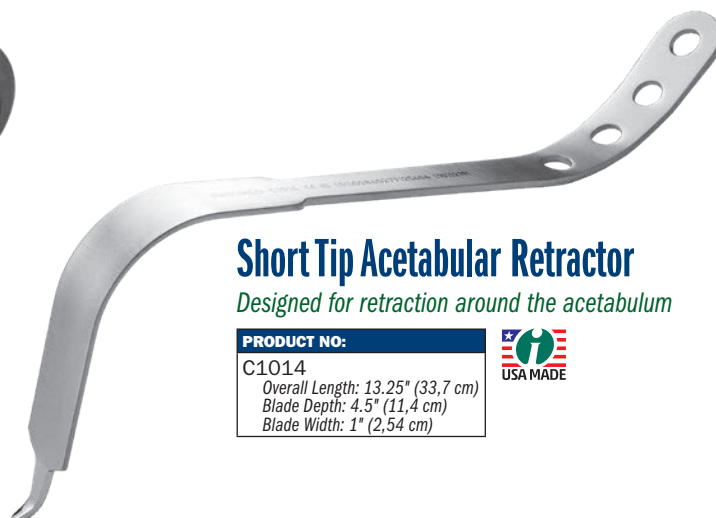
PRODUCT NO:

6239

Overall Length: 12" (30,5 cm)

Blade Depth: (3.5" (8,9 cm)

Blade Width: 1.75" (4,4 cm)



Short Tip Acetabular Retractor

Designed for retraction around the acetabulum

PRODUCT NO:

C1014

Overall Length: 13.25" (33,7 cm)

Blade Depth: 4.5" (11,4 cm)

Blade Width: 1" (2,54 cm)

